

Palliative & End of Life Care



Courses	<ul style="list-style-type: none"> • Certificate in Science (Cert) in Palliative and End of Life Care • Postgraduate Diploma in Science (PgDip) in Palliative and End of Life Care • Master of Science (MSc) in Palliative and End of Life Care.
Eligibility	Multidisciplinary
Mode of Study	Flexible learning/ blended delivery
NFQ Level	Level 9



Ollscoil
 Teicneolaíochta
 an Atlantaigh

Atlantic
 Technological
 University



@AtlanticTUMayo



@ATU_Mayo



atu.mayo

www.atu.ie/mayo

Overview

This programme provides for those who wish to develop competence in caring for persons and their families requiring palliative and end of life care. The suite of modules are designed for all professionals who are working in areas that cater for persons with palliative and/or end of life care needs.

Who can Apply?

Applications are welcome from all professionals such as; doctors, nurses, pharmacists, physiotherapists, social workers, occupational therapists, speech therapists, health care assistants, receptionists, therapists, psychologists, social workers, chaplains, managers and support staff.

Applicants do not have to work in a specialist palliative care area to apply.

Programme Content and Design

The programme is designed around four key themes:

1. Towards improved interdisciplinary professional understandings, principles and innovations in palliative and end of life care.
2. Improving person centred care within the context of palliative and end of life care.
3. Developing a systematic approach to enhancing the comfort and quality of palliative and end of life care.
4. Developing professional and ethical practice in the context of palliative and end of life care.

Credits

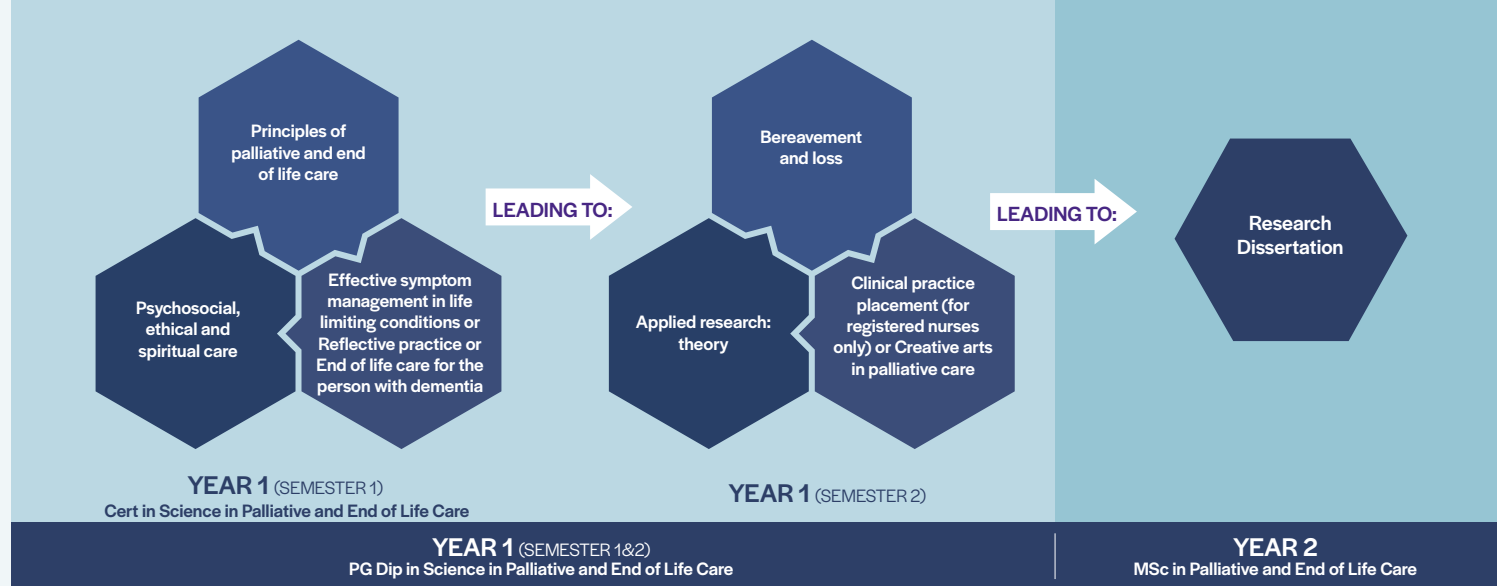
90 credits in total:

- Cert: **30 credits Year 1 Semester 1** (13 weeks)
- PgDip: **60 credits Year 1 Semester 1 (30 credits) & Semester 2 (30 credits)**
- MSc: **90 credits Year 1 (60 credits) & Year 2 (30 credits)**

Career Opportunities

Having completed this programme graduates will have developed enhanced contextual, cultural and professional insights into palliative and end of life care and will be equipped with a set of skills that will have a direct impact in the quality of care offered to persons and families in need of palliative and end of life care in your work area. These roles vary across the spectrum of health and social care. Graduates of this programme will advance their career prospects in terms of promotion eligibility and post-graduate training. This may be in areas of management, practice development and/or specialist clinical areas such as palliative care.

On completion of the programme registered nurses who meet the criteria may be eligible to apply for the position of clinical nurse specialist in a palliative care setting.



Entry Requirements

The entry requirement for undertaking this programme are:

- Honours Degree (H2.2) in any health or social care discipline or recognised cognate professional qualification.
- A minimum of one year's experience in delivering a palliative care approach within practice within the last two years.
- Be employed for the duration of the course in an area where the principles of palliative care are operationalized when caring for individuals with life threatening illness and their families. An example of such may be; Acute Hospitals, community hospitals, care homes, private practice, hospice and community health centers.
- Applicants other than nurses, must be employed in a practice area which allows interaction with patients who have palliative/end of life care needs and, where appropriate, be registered with their respective professional body.

Additional Entry Requirements Specific to Nurses

- Current registration on the appropriate division of the Nursing and Midwifery Board of Ireland live register
- Currently working a minimum of 78 hours per month
- Be employed in a clinical area that is approved by the course team

Recognition of Prior Learning (RPL)

Applicants may use RPL as a means of accessing the programme. They can also use RPL to gain exemptions. RPL can either be certified or experiential. ATU will assess individual applicants on a case-by-case basis, in line with the RPL policy.

How to Apply

Applicants are invited to apply at:

www.atu.ie/apply/directgalwaymayo

This application route is for the Certificate programme, the Postgraduate Diploma programme and the Masters Programme.

Programme Pathways

All students are invited to choose electives relevant to their practice area. The suite of electives provides for this choice thus respecting the diversity of palliative and end of life care environments. There are module choice requirements specific to medical and nursing professionals undertaking the programme. There are also Clinical Nurse Specialist career pathways offered as part of this programme. Please refer to our website for further information on the electives offered and additional requirements to facilitate these pathways www.atu.ie/mayo.

Additional Information

Practice Focus

A key feature of the programme is the strong focus on 'real practice' for the purposes of skill development and confidence building. This will enhance understanding of the palliative care focus and approach to person care.

Lecture Structure

Lectures consist of discussion groups, presentations and debates. Guest lectures from practice experts are a key feature of this programme.

Online Teaching

Much of this programme is completed online. Lecture notes and reading material are provided. Blogs and discussion groups occur online which is very flexible for adult learners.

How often do I have to attend college for lectures?

This programme is specifically designed for busy professionals who cannot commit to weekly college attendance. Instead, you attend college for four residentials in semester one and four in semester two. Residential lectures are delivered on Thursday (2pm-6pm) and Friday (9am-6pm) in the ATU Mayo campus. B&B for the residential component is provided.

Cost

Please refer to our website www.atu.ie/mayo for the most up to date fee schedule.





Further Information

For further information or to discuss your application please contact:

Dr Maura Fitzsimons

Programme Chair

Department of Nursing, Health Sciences and Integrated Care

Email: maura.fitzsimons@atu.ie



@AtlanticTUMayo



@ATU_Mayo



atu.mayo

www.atu.ie/mayo